



## 李世宏

总建筑师助理  
设计总监  
创意六室主任建筑师

Marco J Lee

Chief Architect Assistant  
Design Director  
Creation Department 6

### 学习及工作经历

2013-至今 基准方中建筑设计有限公司

2004-2013年 上海世煜建筑设计工程有限公司 (SY Design Studio)  
设计总监

主要做甲方代表和咨询，也负责建筑方案设计和施工勘察，并负责相关室内设计，比如酒店，多功能综合体设计，建筑外立面，住宅，办公室和会所

2000-2004年 HOK San Francisco  
Architecture Designer & Project Designer

协助设计总监出方案与工程经理出施工图走现场

1999-2000年 NBBJ Columbus Ohio

1993-1999年 美国俄亥俄州立大学 建筑学士、建筑硕士  
建筑大师柯布西耶门生 Jose Oubriere 门生



#### 获奖情况

- 2012年 中国国际建筑设计博览会住宅空间类创新设计一等奖
- 2011年 台湾联排优秀设计奖
- 2010年 受"台商"月刊杂志台媒访谈 & 连刊文章
- 2007年 江苏昆山格林菲尔华美达大酒店获昆山重点十大建设奖
- 2003年 于美国 HOK 参与上海董家渡住宅大楼竞赛一等奖
- 2001年 于美国 HOK 参与阿拉斯加国际医疗中心比赛一等奖  
于美国 HOK 参与作品赢得加州 Fresno 国税局商务楼一等奖
- 2000年 参与作品在日本 GA 上刊登
- 1997年 参与 NBBJ 国际比赛, 设计团队获得台湾台北儿童医院一等奖。

#### 主持或参与设计项目

- 2013年 台湾桃园石门水库独栋别墅群建筑设计
- 2012-2013年 台湾桃园清境六期高级联排别墅建筑设计 & 样板房
- 2011-2012年 上海中信泰富青浦样板房  
江苏扬州锦苑三期样板房  
上海某外滩多功能俱乐部 & 会所
- 2011-2013年 台湾桃园文中路高层公寓住宅
- 2010-2011年 香港泰科办公总部, 中国其它省市办公室
- 2010年前 中国其它省市华美达酒店建筑设计甲方代表和咨询  
上海百联中环商场室内整体设计  
上海绿波花园  
福州新东阳高尔夫俱乐部  
吉林台湾步行街  
上海鼎红会所  
昆山格林菲尔华美达酒店建筑设计 & 室内 + 软装  
昆山千灯华美达酒店建筑设计  
加州喜莱登酒店建筑设计  
中国海南三亚龙湾度假别墅  
中国南京江宁区 R&D 办公中心  
上海董家渡高级住宅大楼  
美国加州 621 首府商业大楼  
美国加州喜莱登大酒店  
美国加州国税局办公大楼  
美国加州假日酒店  
美国旧金山 Gateway 办公大楼  
美国加州北方电信总部  
韩国三星二期总部  
阿拉斯加国际医疗中心  
加州 Bryan 家族酿酒场  
Indianapolis 国际机场  
New Doha 国际机场  
上海兴国宾馆  
上海四季酒店  
....



▼ street view



2.3 million sq. ft. / 216,300 sq. m.

Height: 450 feet / 137 meters  
40 stories

Completion: 2005



## Samsung Research and Development Facility 4

Suwon, South Korea

Located on the Samsung Research and Development campus, this facility responds to the technology company's business strategy and vision for the evolution of its products.

To accommodate Samsung's program and space requirements, the building is 40 stories tall, with one semi-below-grade level featuring a sunken courtyard.

Above the below-grade levels, a six-level podium houses special labs, a multi-purpose auditorium, special function spaces, and employee welfare and support functions. A 32-story office tower - plus mechanical penthouse levels - rises above the podium. The office tower floors are designed with floor plates sized to accommodate a variety of office and lab layouts.

Glass curtain walls provide controlled natural light to specific areas of the podium, while modular metal panels cover other areas. The adjacent sunken courtyard and special labs wing provide a secure, pleasant outdoor space for people visiting the lower-level dining hall. The special labs wing features a sloping glass facade to soften the podium building mass and bring sunlight into the sunken court.

Four below-grade parking levels accommodate 948 vehicles.



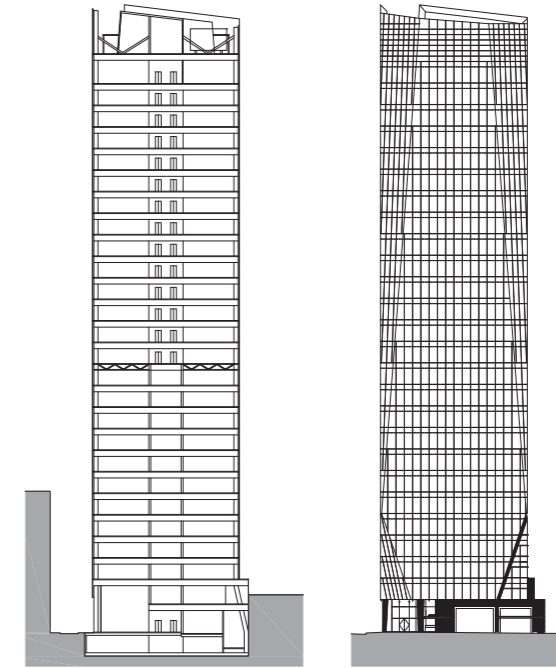
▼ aerial



354,000 sq. ft. / 32,900 sq. m.

Height: 378 feet / 115 meters  
27 stories

Completion: 2014



## 535 Mission Street

San Francisco, California, USA

The slender urban form of this Class A office tower will transform the South of Market (SoMa) district of San Francisco.

Tapered facade corners and a sculptural cornice line define the building's silhouette. A double-height ground floor lobby, pedestrian plazas and improvements along Shaw Alley shape the street-level experience.

Expected to be one of the first LEED Core and Shell Gold pre-certified office towers in San Francisco, the building's advanced mechanical systems, high-performance skin and water use efficiencies will promote sustainability, occupant comfort and productivity. The facade will feature high-performance glass that integrates with indoor controls to enhance its energy and light transmission performance.

The project will provide 3,700 square feet of ground-floor retail space to serve building occupants, visitors and city residents. The building lobby includes publicly accessible open space that flows into the covered outdoor plaza, featuring flexible seating, generous landscaping and an espresso bar.

The addition of new trees and a continuous band of planting along Shaw Alley softens the streetscape and enhances the pedestrian environment linking the building to the adjacent Transbay Terminal.

To expand the public open space, the project proposes to close Shaw Alley to vehicular traffic during the lunch hour on weekdays. New concrete paving in the alley will add pedestrian scale and texture, establishing visual continuity.



▼ view from southeast



**680,000 sq. ft. / 63,200 sq. m.**

**Height: 404 feet / 123 meters**  
**25 stories**

**Completion: 2008**



## US Bank Tower at 621 Capitol Mall

Sacramento, California, USA

The region's tallest tower celebrates Sacramento's skyline with grace, dignity and simplicity. The clear, distinctive architectural vision creates a tower that integrates energy efficiency and sustainability.

Unlike many of the older buildings on Capitol Mall, the US Bank Tower's exterior is light and open, allowing a glimpse of the activities taking place within.

The soaring south facade is illuminated at night, while double-pane windows welcome natural light into the building. Rooftop photovoltaic panels generate electricity.

At street level, a linear park connects the Capitol Mall with L Street. Pedestrians walking along the park can see the mall's entire length and enjoy striking views of the California State Capitol. The park's landscaping and retail

destinations define scale, sustain pedestrian activity and establish a sense of community through the coffee shop, restaurant, cafés and banking facilities.

The expansive, seven-story lobby establishes a unique visual relationship with the State Capitol and houses several site-specific sculptural installations. The easy-to-navigate lobby also includes art created in collaboration with the Sacramento Metropolitan Arts Commission's "Art in Public Places" program.